

Parallel-Groove Connectors

Galvanized steel hardware provides high strength for heavy-duty applications.

PAE Parallel-Extruded Type Groove Clamps

- Install with live line tools you already have
- Dual-rated for aluminum-to-copper connections
- Prefilled with oxide inhibitor ("-9" suffix in chart) to prevent oxidation on copper-to-aluminum connections

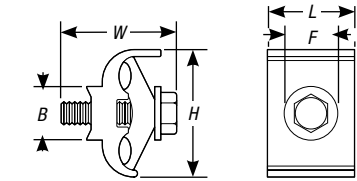


Fig. 1

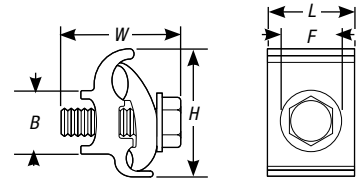


Fig. 2

Note: For aluminum-hardware option, add "-7" suffix to the catalog number.
 For tin-plating option, add "-P" suffix to the catalog number.
 For wax-dip option that provides oxide protection for aluminum-to-aluminum connections, add "-6" suffix to the catalog number.

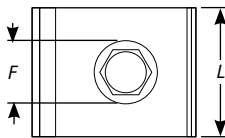


Fig. 3

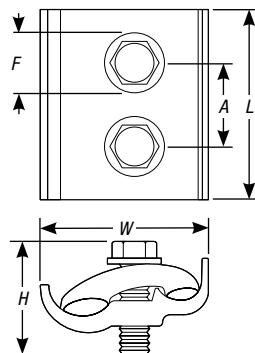


Fig. 4

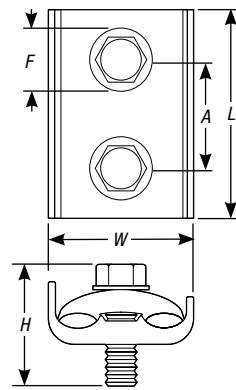


Fig. 5

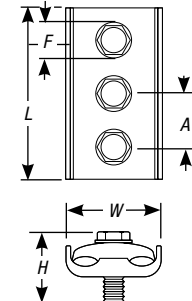


Fig. 6

CAT. NO.	CONDUCTOR RANGE		CONDUCTOR DIAMETER (IN.)				DIMENSIONS (IN.)						GALVANIZED ALUMINUM		
	MAIN	TAP	MAIN		TAP		FIG.	H	W	L	F	B	A	STEEL BOLT THD. SIZE	BOLT THD. SIZE
			MAX.	MIN.	MAX.	MIN.									
PAE-335-79	1/0 str.-#6 sol.	1/0 str.-#6 sol.	.398	.162	.398	.162	1	1 1/16	1 1/2	1 1/4	3/16	—	—	3/8-16 UNC	3/8-16 UNC
PAE-2121-9*	2/0 ACSR-#6 sol., #6 AR	2/0 ACSR-#6 sol., #6 AR	.447	.162	.447	.162	1	2	1 1/8	1 3/8	3/16	7/8	—	3/8-16 UNC	3/8-16 UNC
PAE-2121X-79	2/0 ACSR-#6 sol., #6 AR	2/0 ACSR-#6 sol., #6 AR	.447	.162	.447	.162	1	2	1 1/8	1 3/8	3/16	7/8	—	—	3/8-16 UNC
PAE-4141-9*	4/0 ACSR-#2 sol., #4-#6 AR	4/0 ACSR-#2 sol., #4-#6 AR	.563	.258	.563	.258	1	2	2	1 3/8	3/16	7/8	—	3/8-16 UNC	3/8-16 UNC
PAE-3921-9-2	397.5 ACSR-3/0 str., 2/0-#6 AR	2/0 str.-#6 sol., #6 AR	.743	.464	.414	.162	2	2 5/16	2 1/4	1 3/8	3/4	1 1/8	—	1/2-13 UNC	1/2-13 UNC
PAE-9941-9	1000-397.5 ACSR, 336.4-2/0 AR	4/0 ACSR-#2 sol., #4-#6 AR	1.152	.743	.563	.258	3	2 13/16	2 5/8	2 1/4	3/4	—	—	1/2-13 UNC	1/2-13 UNC
PAE-3931-9-2	397.5 ACSR-3/0 str., 2/0-#6 AR	3/0 ACSR-2 str., #6 AR	.743	.464	.502	.292	4	2 3/16	2 1/8	3 3/8	3/4	—	1 1/4	1/2-13 UNC	1/2-13 UNC
PAE-3939-9-2	397.5 ACSR-3/0 str., 2/0-#6 AR	397.5 ACSR-3/0 str., 2/0-#6 AR	.743	.464	.743	.464	5	2 3/16	2 3/8	3 3/8	3/4	—	1 1/8	1/2-13 UNC	5/8-11 UNC
PAE-9921-9	1000-397.5 ACSR, 336.4-2/0 AR	2/0 str.-#6 sol., #6 AR	1.152	.743	.414	.162	3	2 13/16	2 3/8	2 1/4	3/4	—	—	1/2-13 UNC	5/8-11 UNC
PAE-9939-9	1000-397.5 ACSR, 336.4-2/0 AR	397.5 ACSR-3/0 str., 2/0-#6 AR	1.152	.743	.743	.464	4	2 3/16	3 3/8	3 1/2	3/4	—	1 1/2	1/2-13 UNC	5/8-11 UNC
PAE-9999-9	1000-397.5 ACSR, 336.4-2/0 AR	1000-397.5 ACSR, 336.4-2/0 AR	1.152	.743	1.152	.743	6	2 13/16	3 1/2	6	3/4	—	2	1/2-13 UNC	5/8-11 UNC

* RUS Accepted.
 AR = Over armor rod.